



ELBP Bespoke Load Pins



Euroload Limited offer a complete design service for bespoke load pins. Design, approval, manufacture, safe area or ATEX/IEC.

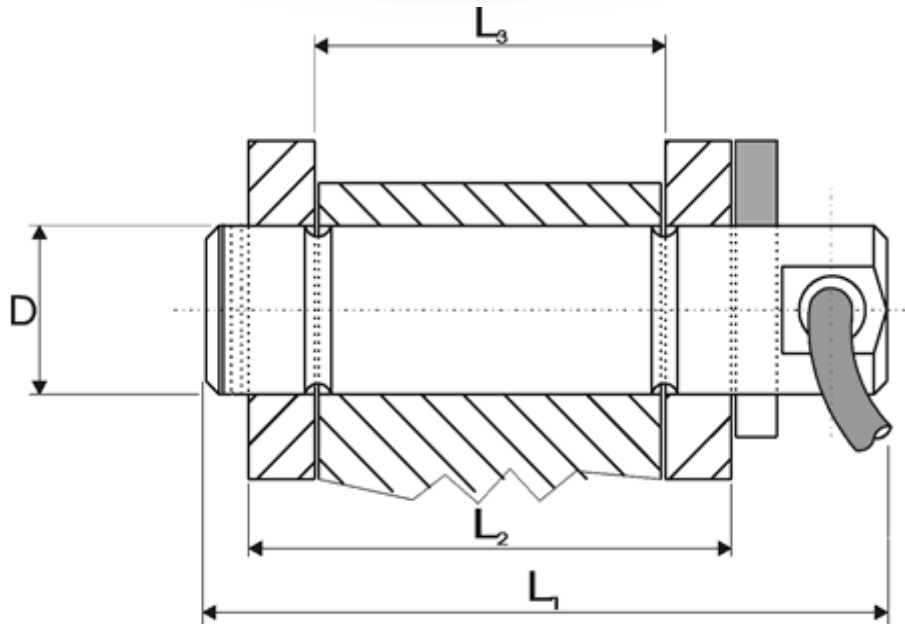
Load pins can be designed for any application, size and SWL to meet your exact requirements.

As standard our load pins are fully stainless steel construction, down hole strain gauged, sealed to IP68, minimum 5:1 factor of safety, 700 ohm bridge, Mv/v output.

Options include, subsea spec on pin and connectors, ATEX/IEC approved, dual outputs, 4-20ma output, RS 485 output, customer specified connectors.

All Euroload designed load pins can be used bi-directionally.

Contact our design team for more information. Tel: +44 1224 774114
mark@euroload.eu info@euroload.eu



PLEASE FILL IN CRITICAL DIMENSIONS FOR QUOTATION

LOAD PIN SPECIFICATIONS; TYPICAL VALUES.

RATED LOAD	1.0 TO 2000 TONNE
PROOF LOAD	150 % OF RATED LOAD
SAFETY FACTOR	MIN 5:1 DEPENDING ON DESIGN UP TO 10:1
OUTPUT	1.0 TO 2.0 DEPENDING ON DESIGN. OPTIONAL 4-20MA OUTPUT AVAILABLE
EXCITATION VOLTAGE	5-15 VDC 10VDC RECOMENDED
BRIDGE RESISTANCE	700 OHM
INSULATION RESISTANCE	>2G OHM
OPERATING RANGE	-20 TO +80 DEG C
CABLE LENGTH	CUSTOMER TO SPECIFY
WIRING	RED + SUPPLY. BLUE – SUPPLY.GREEN + SIGNAL.YELLOW – SIGNAL.

Load measuring pins are the simplest and most reliable method of measuring loads. They can be used in a great number of situations, including the most severe environments – sub sea, mining offshore and heavy industry. They can be incorporated easily and economically into the load path by replacing any existing bearing pin.

Typical applications, rope sheaves, fairleads winches, cranes, mooring systems and many more.

Options available; various output types, millivolt, milliamp, volt, rs232, telemetry. Dual strain gauging. Dual outputs of different types, dual axis output, sub sea sealed, gland output or connectors, customer specifies connectors.